



# Hoof Beats

## Kiwanis Club of the Horse Heaven Hills

PO Box 6798, Kennewick, WA 99336

[www.HorseHeavenKiwanis.org](http://www.HorseHeavenKiwanis.org)

**November 2, 2009**

Edited by: [John Lawson](#), [Donna Underwood](#), [Doug Brown](#)

If you have an announcement, advertisement, or article you'd like included, contact one of our editors.

Remember, there is always more information about our club on our website at [www.HorseHeavenKiwanis.org](http://www.HorseHeavenKiwanis.org)

President Doug Brown opened the November 2 meeting. Kathy Loney gave our invocation. The SIGN collection was circulated for donations.

Bernie Borgen was the only guest this week.

### **Birthdays, Anniversaries & Brags**

Don Barnes was wrangler.

There were quite a few birthdays noted this week: Lorraine Cooper's husband, Jo Harrington's sister and two nephews, and Don Barnes' wife. Donna Underwood said we had 45 volunteer hours last month with the Head Start program. Jo Harrington thanked those who had helped with Math Night and noted the Tutoring program would start this week at Virgie Robinson.

Andy Perdue's favorite Cougs didn't lose (but they didn't play either). He will be teaching a wine class focused on champagne and promised a spectacular bottle opening technique. A wine tasting this weekend at Clover Island sampled 450 bottles of wine. Look for some auctions of bottles here next week.

Bernie Borgen's friend Dottie lost her daughter-in-law. He also bragged about his skills preparing lutefisk and lefse.

Don Barnes put in 2 cents for each trick or treat that had visited his home.



Bernie Borgen won this week's raffle.

## **Announcements and Coming Events**

### **Special Things We Did Last Week**

Bernie Borgen is on track to become our newest new member. The Board of Directors voted to accept his nomination for membership.



*Kathy Loney at Virgie Robinson Math Night*

Math Night at Virgie Robinson was a success from the school's standpoint and from our club's perspective as well. Jo Harrington was there along with Lauren Hedeem, Terry and Kathy Loney, and Sarah Longan.

### **Salvation Army**

Marilyn circulated her signup sheet again and noted proudly that she now has all but one time slot filled.

### **Meetings**

Youth Services met following the regular Kiwanis meeting to discuss the outcome for the Dinner Dance. Thursday Nov. 5 the Administrative Committee will meet at noon in the Crows Nest. Friday November 6, there will be a Membership Committee lunch meeting at the Bamboo Garden. On Thursday Nov. 12 there will be a Board Meeting at the Clover Island Inn at 11:45.

## Interclubs

### **November Interclub Calendar:**

**TCI – Clarion Inn, Richland**

**Friday, November 6 at noon**

An interesting presentation about CBC's new Leadership Program is scheduled.

**Walla Walla – Walla Walla**

**Tuesday, November 10 at noon**

Solar power will be the topic for the program. *Doug Brown and Wayne Underwood will be leaving at 10:30 after meeting in the lobby of the Clover Island Inn. Andy Perdue and Marilyn Hyde are also contemplating the trip with a stop over at some of the local wineries. Coordinate with Doug or Andy for car pool opportunities. Reservations are recommended.*

## **Starfish Award**

Jo Harrington awarded a starfish pin to Bernie Borgen for all his work on the J&S this summer.

## **Next Week's Program:**

**Doug Brown  
20th Anniversary:  
The Fall of the Berlin Wall**

## **This Week's Program:**

**Genoveva Morales-Ledesma: GEAR UP**



*Genoveva Morales-Ledesma*

Genoveva Morales-Ledesma is the Director of WSU Tri-Cities' Early Outreach program. GEAR UP is the acronym for "Gaining Early Awareness and Readiness for Undergraduate Programs". GEAR UP and UPWARD BOUND are the central programs of WSU's Early Outreach. They are

grant funded projects by the department of Education. They target their efforts to Middle School and High School students from selected schools. Their purpose is to facilitate and motivate these typically under-represented student populations to progress through high school graduation and into post secondary programs.

She began working at Early Outreach for WSU about 6½ years ago when the first GEAR UP cohort began at Walla Walla and Moses Lake with Middle Schoolers. The program has been able to follow them through High School and graduation and now they are entering college programs.

To be successful, the program engages students and families to give them strategies and experience geared towards college and life success.

Today the area served reaches from Ephrata to Dayton and from White Swan to Clarkston.

GEAR UP is a unique program in that it follows a selected cohort of students for 6 years, from Middle School through graduation. The program has shown moderate improvements in graduation rates. It serves all the students in the selected group, assures that they visit local colleges that interest them. Middle School students are motivated to achieve success in High School with a graduation plan and with the student and family skills to apply for admission and financial aid in colleges of their choice.

The Upward Bound program encourages students to take the Preliminary Scholastic Aptitude Test, or PSAT. Some expressed concerns about students taking yet another test and possibly getting negative feedback from the results. However, many students are encouraged by their scores and the positive reaction of universities who communicate with successful test takers and invite them to apply later if they keep up the fine work.

Genoveva responded to questions from the audience and related some of the individual success stories she has seen. For more information visit their [website](http://earlyoutreach.wsu.edu) at earlyoutreach.wsu.edu to find out more.

**Belva Whitlock**  
KeyCenter Manager  
Kennewick KeyCenter  
Belva\_Whitlock@keybank.com  
Tel: 509-586-5207  
Toll Free: 800-KEY-2YOU  
Fax: 509-586-8972

**KeyBank**  
Mailcode: WA-31-99-0218  
23 W. Kennewick Ave  
Kennewick, WA 99336



**Meier**  
ARCHITECTURE • ENGINEERING

**Dale E. Green, P.E., LEED AP**  
Project Manager

E: degreen@meierinc.com

8697 Gage Boulevard  
Kennewick, WA 99336

P: 509.735.1589  
F: 509.783.5075

[www.meierinc.com](http://www.meierinc.com)



**Carolyn Lawson, REALTOR®**  
QSC, Premier Service® Certified  
**(509) 947-5447**  
6601 W. Deschutes Avenue, Suite C  
Kennewick, WA 99336

PREMIER SERVICE®  
DIAMOND

**Cypress**  
**GMAC**  
Real Estate



carolyn@cypressgmac.com  
www.cypressgmac.com/carolyn  
www.lawson-us.com



**Kathy Loney**  
Assistant  
Cell 509-430-7968



**Terry Loney**  
REALTOR®

Cell 509-531-4209  
Business 509-946-1188  
E-mail [terryloney@windermere.com](mailto:terryloney@windermere.com)



**Windermere**

Windermere Real Estate/Tri Cities  
490 Bradley Boulevard  
Richland, Washington 99352



"it's an island thing"

**Mark Blotz**  
General Manager

Phone: 509-586-0541  
[cloverisland.inn@verizon.net](mailto:cloverisland.inn@verizon.net)  
Fax: 509-586-6956

Reservations: 1-866-586-0542  
[www.cloverislandinn.com](http://www.cloverislandinn.com)  
435 Clover Island Drive • Kennewick, WA 99336



**KENNEWICK FIRST CHRISTIAN CHURCH**  
(Disciples of Christ)

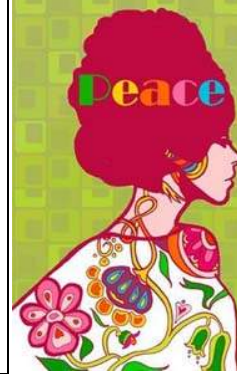
Serving Kennewick for over 100 years  
1921 S. Olympia St, Kennewick WA 99337  
Sunday Morning Worship 10 am, Sunday School 9 am (509) 586-2101



**Anthony's**  
Boot & Shoe Repair  
Mon-Fri 10-5:30, Sat 10-4

(509) 586-6779

11 S. Benton  
Kennewick, WA 99336



**Threads new & recycled  
designer & vintage clothing**  
201 N. Edison Suite 250  
(Marineland Village), Kennewick  
(509) 735-4370

Mon-Fri 10-6 Sat. 10-5

**THREADS**

*Donna Knapp*

We can add your card or message here. Contact one of our editors for sponsorship information.

**Special Thanks for our 2009 J&S Dreamland Express Sponsors:**



**PASCO TIRE FACTORY**

